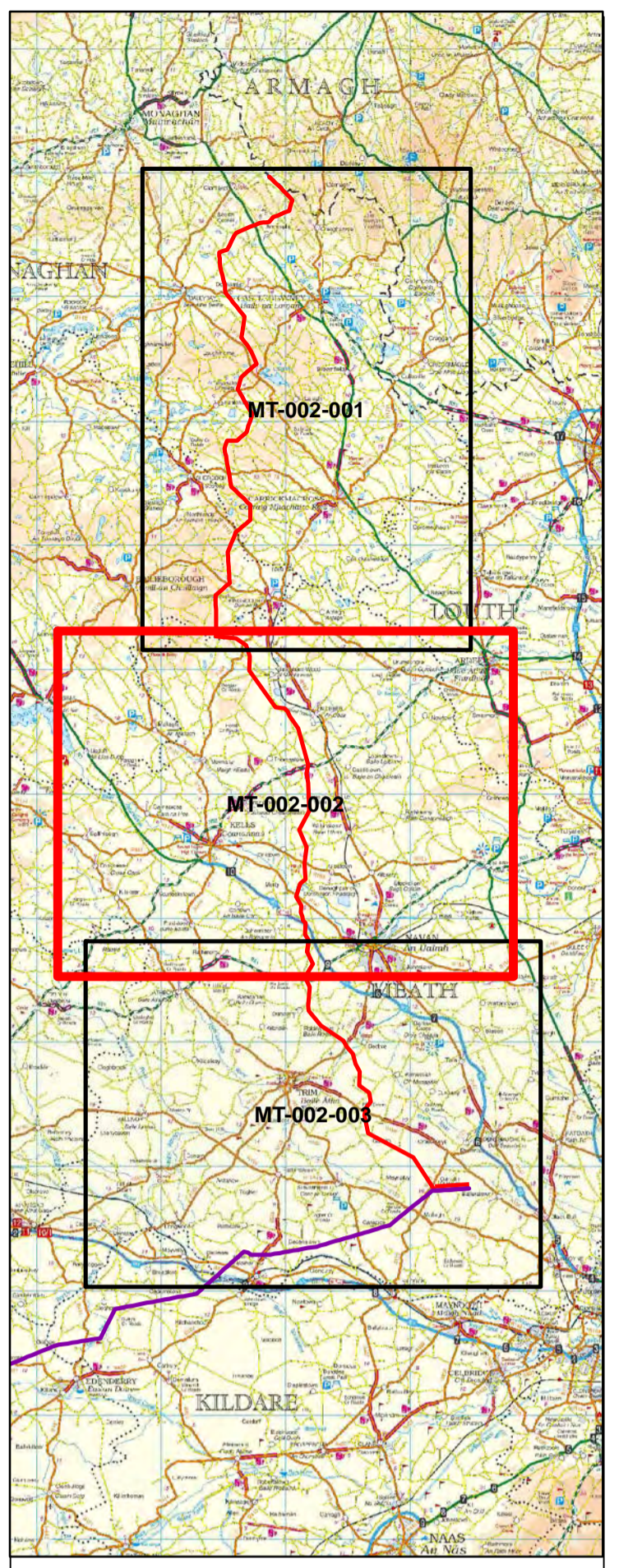
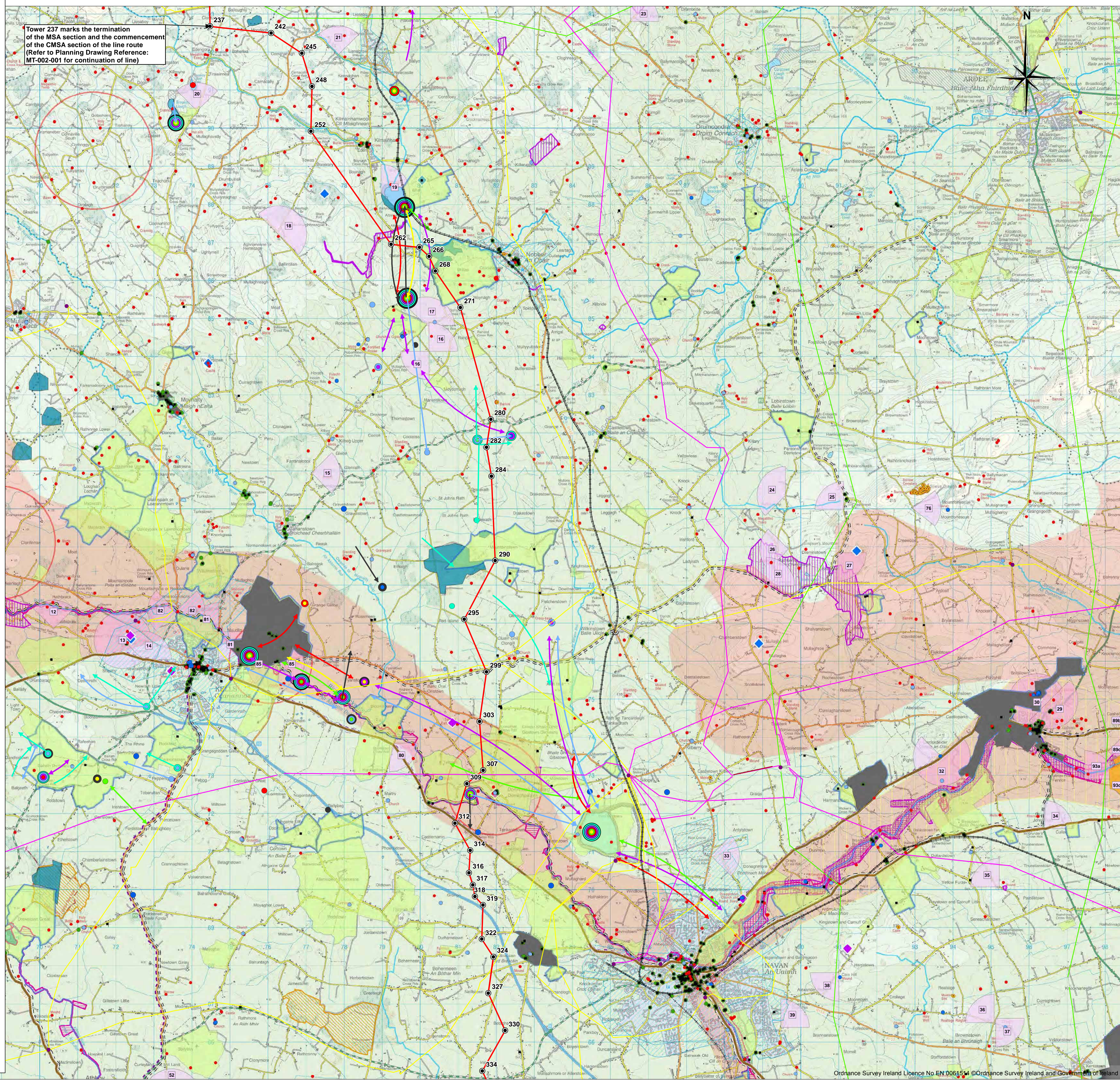


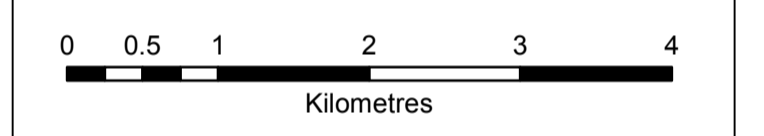
Legend

- Proposed Angle Tower Location
- Proposed Line Route
- Ecology**
- Swan flight lines 2007/08
- Swan flight lines 2008/09
- Swan flight lines 2009/10
- Swan flight lines 2010/11
- Swan flight lines 2011/12
- Swan flight lines 2012/13
- Swan flight lines 2013/14
- Historical Swan Site
- Swan Site recorded in Winter Survey Period 1: 2007/2008
- Swan Site recorded in Winter Survey Period 2: 2008/2009
- Swan Site recorded in Winter Survey Period 3: 2009/2010
- Swan Sites recorded in Winter Survey Period 4: 2010/2011
- Swan Site recorded in Winter Survey Period 5: 2011/2012
- Swan Site recorded in Winter Survey Period 6: 2012/2013
- Swan Site recorded in Winter Survey Period 7: 2013/2014
- Sensitive Ecological Receptors
- Natural Heritage Area (NHA)
- Proposed Natural Heritage Area (pNHA)
- Special Area of Conservation (SAC)
- Special Protection Area (SPA)
- Geology**
- Geological Interest Site (identified by GSI)
- Geological Interest Site (surveyed by GSI)
- Landscape**
- ◆ Boyne Valley Sites
- ◆ Meath Landmarks
- Draft Landscape Conservation Area
- Meath Landscapes of Exceptional Value
- Meath High Sensitivity Landscape
- Areas of Potential Tourism
- Scenic Viewpoints for County Meath
- Infrastructure**
- 38 kV line
- 110 kV line
- 220 kV line
- National Road
- Motorway
- Gas Pipeline – Considered but not shown
- East-West Interconnector
- Windfarm
- Gas Stations – Considered but not shown
- Electricity Station
- Cultural Heritage**
- Monuments Covered by Preservation Orders
- National Inventory of Architectural Heritage (NIAH)
- National Monuments
- Potential National Monument
- Record of Protected Structures (ROI)
- Record of Monuments and Places (RMP)/Sites and Monuments Record (SMR)
- Architectural Conservation Area (ACA)
- Demesne Landscapes and Historic Gardens
- Bru na Boinne
- Miscellaneous**
- Railway
- Planned Navan Line (Disused Railway Track)
- Boyne Valley Driving Route
- Meath Existing Driving Routes
- Meath Existing Paths and Cycling Routes
- Meath Potential Paths and Cycling Routes
- Major river
- Lake/Lough
- Urban areas

Tower 237 marks the termination of the MSA section and the commencement of the CMSA section of the line route (Refer to Planning Drawing Reference: MT-002-001 for continuation of line)



NOTES:
 1. Transition line and towers not to be scaled
 2. Discovery Series files used: OS2626, OS2626, OS2626, OS2626



C	DEC 2014	Issued	G.F.	D.G.
B	JUL 2014	Issued	M.N.	D.G./M.N.
A	JAN 2014	Issued	M.S.	D.G./M.N.
Issue	Date	Description	By	Chkd.

Client:

Project: **NORTH SOUTH 400 kV INTERCONNECTION DEVELOPMENT**

Title: **MSA Line Route Map - Constraints 1:50 000 Planning Drawing Sheet 2 of 3**

Scale @ A1: 1:50,000
 Prepared by: G.F.I. Checked: O. McAlister Date: December 2014
 Project Director: Damien Grehan
 Planning Dwg Ref: MT-002-002

Patrick J. Tobin & Co. Ltd.
 Consulting, Civil and Structural Engineers,
 Block 10-4, Blanchardstown Corporate Park,
 Dublin 15, Ireland.
 tel: +353-(0)1-8030406
 fax: +353-(0)1-8030409
 e-mail: info@tobin.ie
 www.tobin.ie

No part of this document may be reproduced or transmitted in any form or stored in any retrieval system of any nature without the written permission of Patrick J. Tobin & Co. Ltd. as copyright holder except as agreed for use on the project for which the document was originally issued.

Drawing No.: 6244-1000 Issue: C